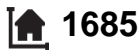
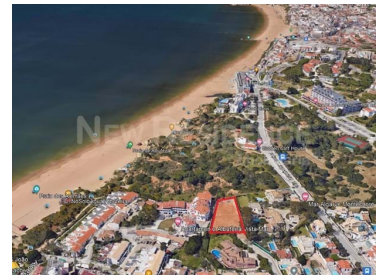
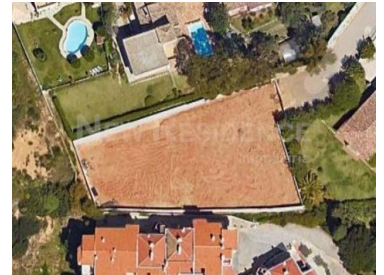




## Albufeira e Olhos de Água - Land



1685

Area (m²)



1685

Land Area (m²)

**1 000 000 €**

(EUR €)

### Albufeira - Exclusive Land in Albufeira – 300m from the Historic Center and Close to the Sea

Exclusive Land 300 Meters from the Beach – Albufeira, Algarve

Imagine waking up every day to the sea breeze and the charm of the historic center of Albufeira just a short walk away. This 1,685 m² plot, located in one of the most coveted areas of the Algarve, offers the perfect setting to bring a truly special project to life – whether it is a luxury villa or a custom construction that reflects the best of the Algarve lifestyle.

With the possibility of construction up to 500 m², this space is ideal for those who aspire to a large residence, with a private garden, swimming pool and architecture that values the natural surroundings and the unique luminosity of southern Portugal. The topography of the land also allows



**CARLA BENTO**

Real Estate Consultant

+351 967 015 042 <sup>2</sup> · +351 289 548 219 <sup>1</sup>

carlabento.newresidence@hotmail.com

T +351 289 548 219 <sup>1</sup> · T +351 967 015 042 <sup>2</sup> ·

Edifício Oura Casa Branca Lote 6 Loja 10 - Estrada de Santa Eulália - 8200-269 Albufeira  
AMI 5961

<sup>1</sup> (Call to national fixed network) | <sup>2</sup> (Call to national mobile network)



you to explore panoramic views of the sea and the white roofs of the old center, depending on the design adopted.

The location is simply second to none. In less than five minutes walk, you are in the vibrant heart of Albufeira, surrounded by restaurants, shops, cafes and all the essential services. And yet, the land provides the tranquility and modesty necessary for those looking for comfort and exclusivity in one place.

Investing in this land is more than acquiring a piece of land – it is ensuring a space with the potential for constant appreciation, in a region where the demand for high-end real estate continues to grow. It is also the opportunity to realize a vision, whether personal or investment, in one of Europe's most prestigious destinations.

If you're looking for a place where the sea meets sophistication, and where every detail can be shaped to your liking, then this is the perfect start to your next big project.

Contact us and schedule your visit now!!

The future of your dream home starts here.

## Property Features

- Proximity: Beach, Shopping, Restaurants, City, Pharmacy, Public Transport
- Views: Sea views, Urbanization view
- Main drainage
- Mains water



**CARLA BENTO**

Real Estate Consultant

+351 967 015 042 <sup>2</sup> · +351 289 548 219 <sup>1</sup>

carlabento.newresidence@hotmail.com

T +351 289 548 219 <sup>1</sup> · T +351 967 015 042 <sup>2</sup> ·

Edifício Oura Casa Branca Lote 6 Loja 10 - Estrada de Santa Eulália - 8200-269 Albufeira  
AMI 5961

<sup>1</sup> (Call to national fixed network) | <sup>2</sup> (Call to national mobile network)